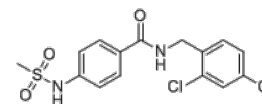


Product Name : ML335
Cat. No. : PC-60337
CAS No. : 825658-06-8
Molecular Formula : C₁₅H₁₄Cl₂N₂O₃S
Molecular Weight : 373.248
Target : Potassium Channel
Solubility : 10 mM in DMSO



Biological Activity

ML-335 (ML335) is a novel potent, selective **K2P2.1 (TREK-1)** and **K2P10.1 (TREK-2)** channels activator with EC₅₀ of 14.3 and 5.2 μM, respectively.

ML335 displays no significant activity for K2P4.1 (at 50 μM); shows insensitivity to mutant K2P2.1(K271Q), and has similar EC₅₀ for K2P4.1(Q258K) (EC₅₀=16.7 μM).

References

Lolicato M, et al. *Nature*. 2017 Jul 20;547(7663):364-368.

Caution: Product has not been fully validated for medical applications. Lab Use Only!

E-mail: tech@probechem.com